

# SABÂ SAZ SEMÂİSİ

Usulü: Aksak Semâî  $\text{♩} = 120$

Dr. İrfan Doğrusöz

1. Hane



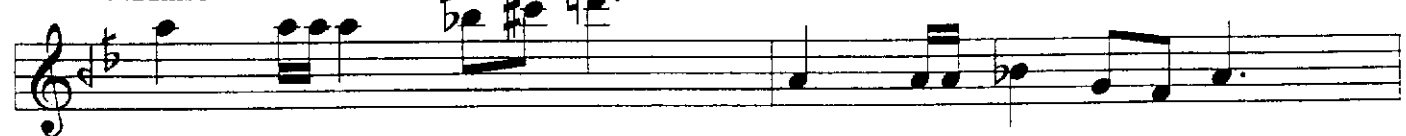
Teslim



2. Hane



3. Hane



Saba saz semaisi devamı

Handwritten musical score for Saba saz semaisi devamı. The score consists of ten staves of music, written in treble clef with a key signature of one flat (B-flat) and a 3/8 time signature. The notation includes various notes, rests, and ornaments. The first staff ends with a double bar line and a repeat sign. The second staff is marked "4. Hane" and "♩ = 160". The third staff has a sharp sign above the first note. The fourth staff has a sharp sign above the second note. The fifth staff has a sharp sign above the first note. The sixth staff has a sharp sign above the first note. The seventh staff has a sharp sign above the first note. The eighth staff has a sharp sign above the first note. The ninth staff has a sharp sign above the first note. The tenth staff has a sharp sign above the first note and a double bar line with a repeat sign. The score is written in a clear, legible hand.